

Categoria de importanță (cf. HGR 766/1997): A
Clasa de importanță (cf. P100 - 1/2013): I
Gradul de rezistență la foc (cf. P118/99): Gradul I
Risc de incendiu (cf. P118/99): Risc mic de incendiu

Zona seismică de calcul este caracterizată prin valoarea de varf a accelerației terenului $a_g=0.25g$, perioada de colt $T_c=0.7s$ conform normativ P100-1/2013

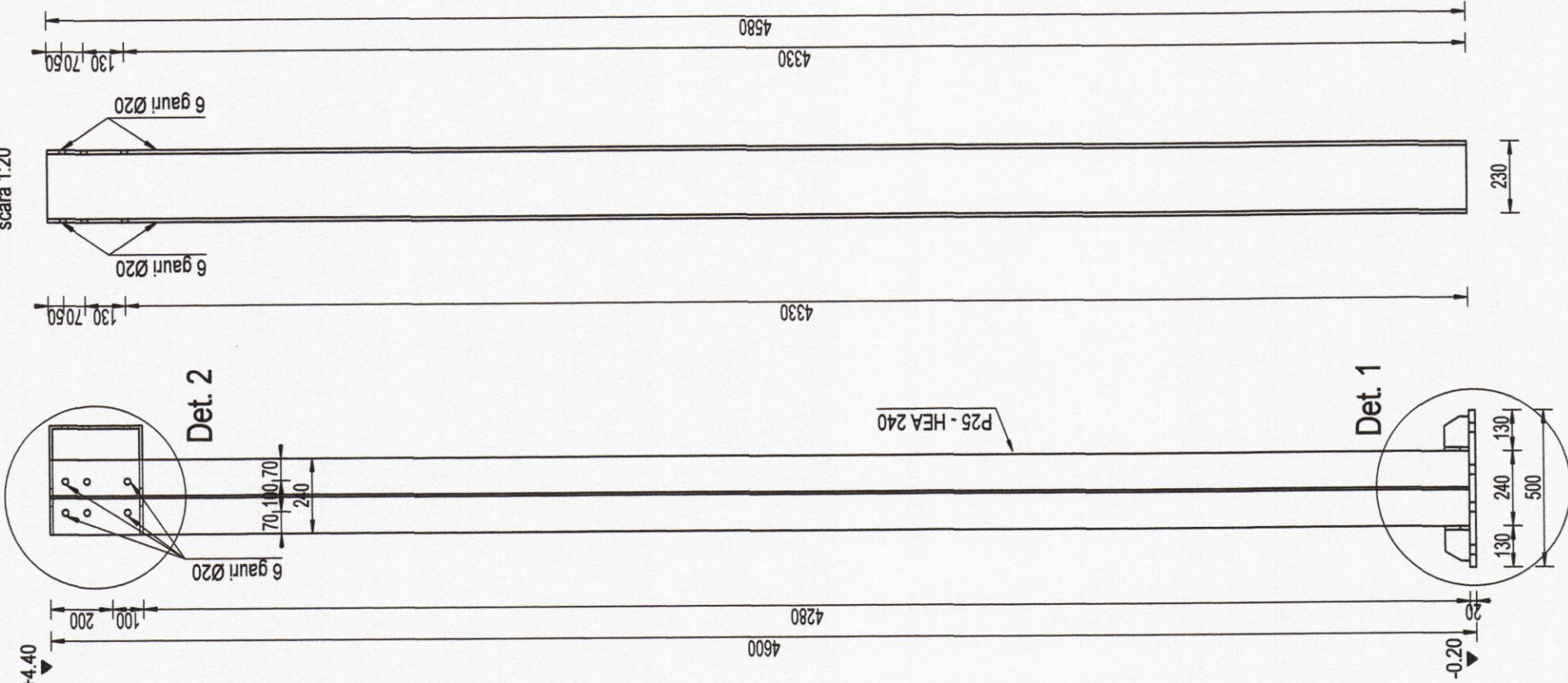
*Categorie de execuție a elementelor conform STAS 7670-88:
Categorie de execuție - B
*Clasa de calitate oleului conform SREN 1993-1-10/2006:
Clasa de calitate - 2
*Calitatea îmbinărilor sudate conform Normativ C 150-99:
Nivel de acceptare a îmbinărilor sudate - B

MATERIALE - conf. SR EN 10025:2004:
a. S355J2 - bare laminat și table - structura principală
- limita de curgere minimă $f_y = 355 N/mm^2$
- modulul de elasticitate $E = 210000 N/mm^2$

b. Toate suruburile de prindere a ansamblurilor vor fi grupa 8.8.

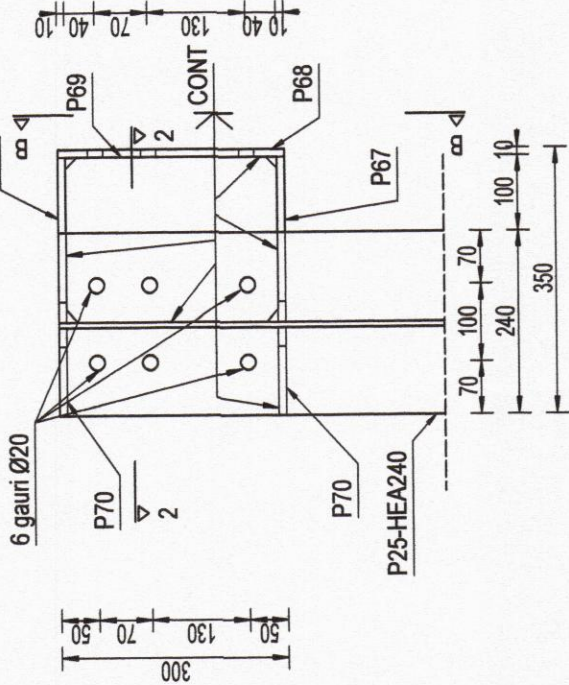
Ansamblu S11 - 2 buc.
scara 1:20

P25 - HEA240
L=4580 - 1 buc.
scara 1:20



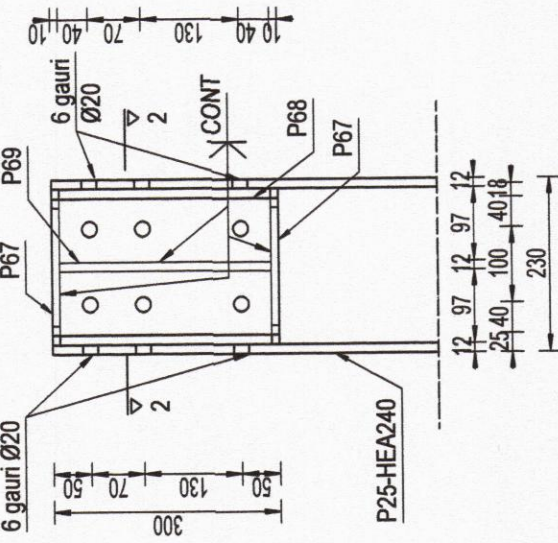
Detaliu 2

scara 1:10



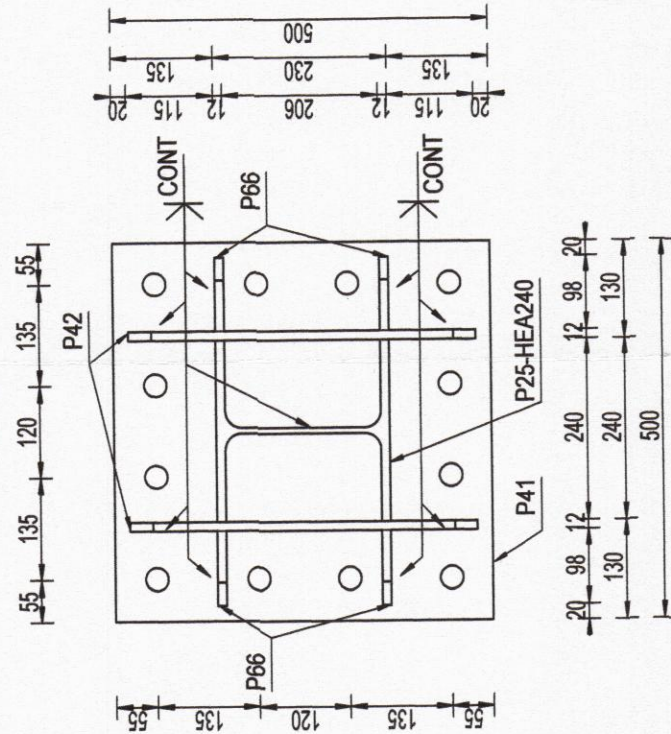
Secțiune B - B

scara 1:10



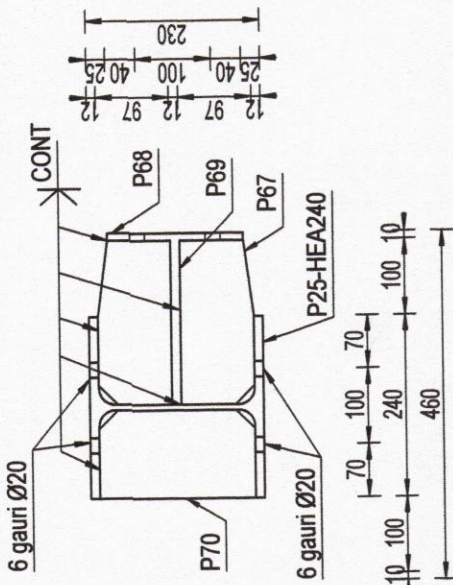
Secțiune 1 - 1

scara 1:10



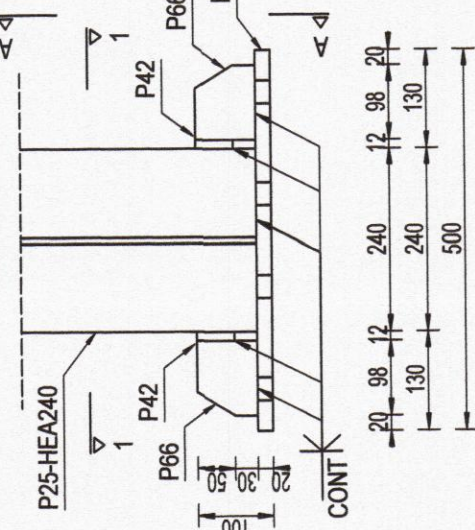
Secțiune 2 - 2

scara 1:10



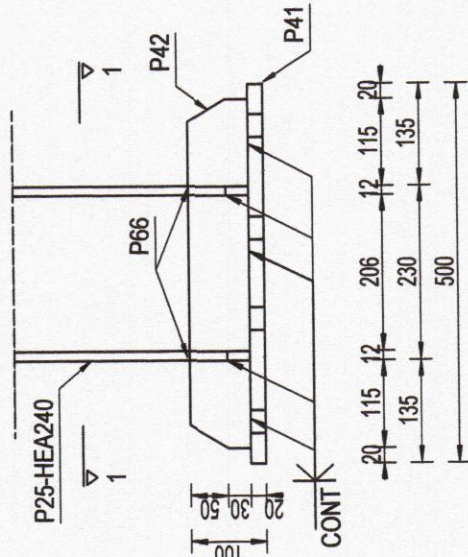
Detaliu 1

scara 1:10



Vedere A - A

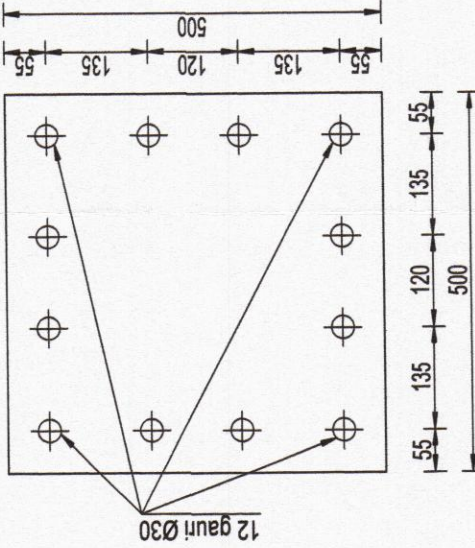
scara 1:10



P41 - 1 buc.

tg. 20x500-500

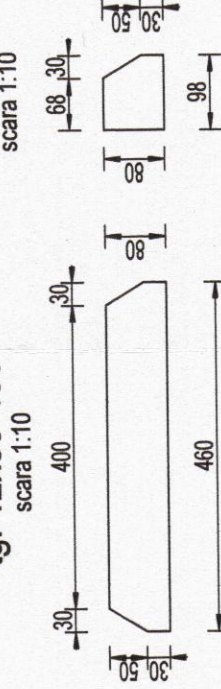
scara 1:10



P42 - 2 buc.

tg. 12x80-460

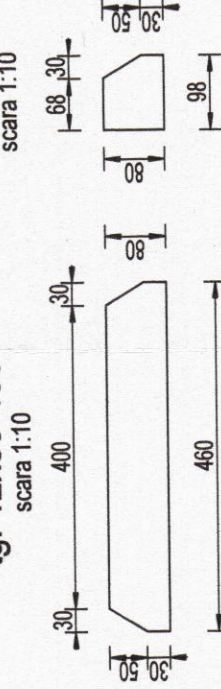
scara 1:10



P66 - 4 buc.

tg. 12x80-98

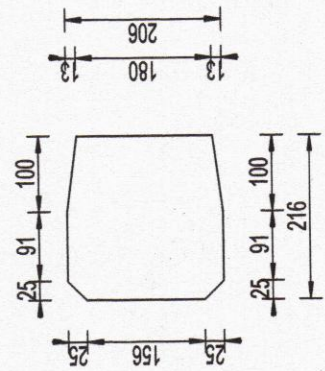
scara 1:10



P67 - 2 buc.

tg. 10x206-216

scara 1:10



P70 - 2 buc.

tg. 10x116-206

scara 1:10

